

# XPOD

© 2020 by Multiply Holdings Pty Ltd. All rights reserved.

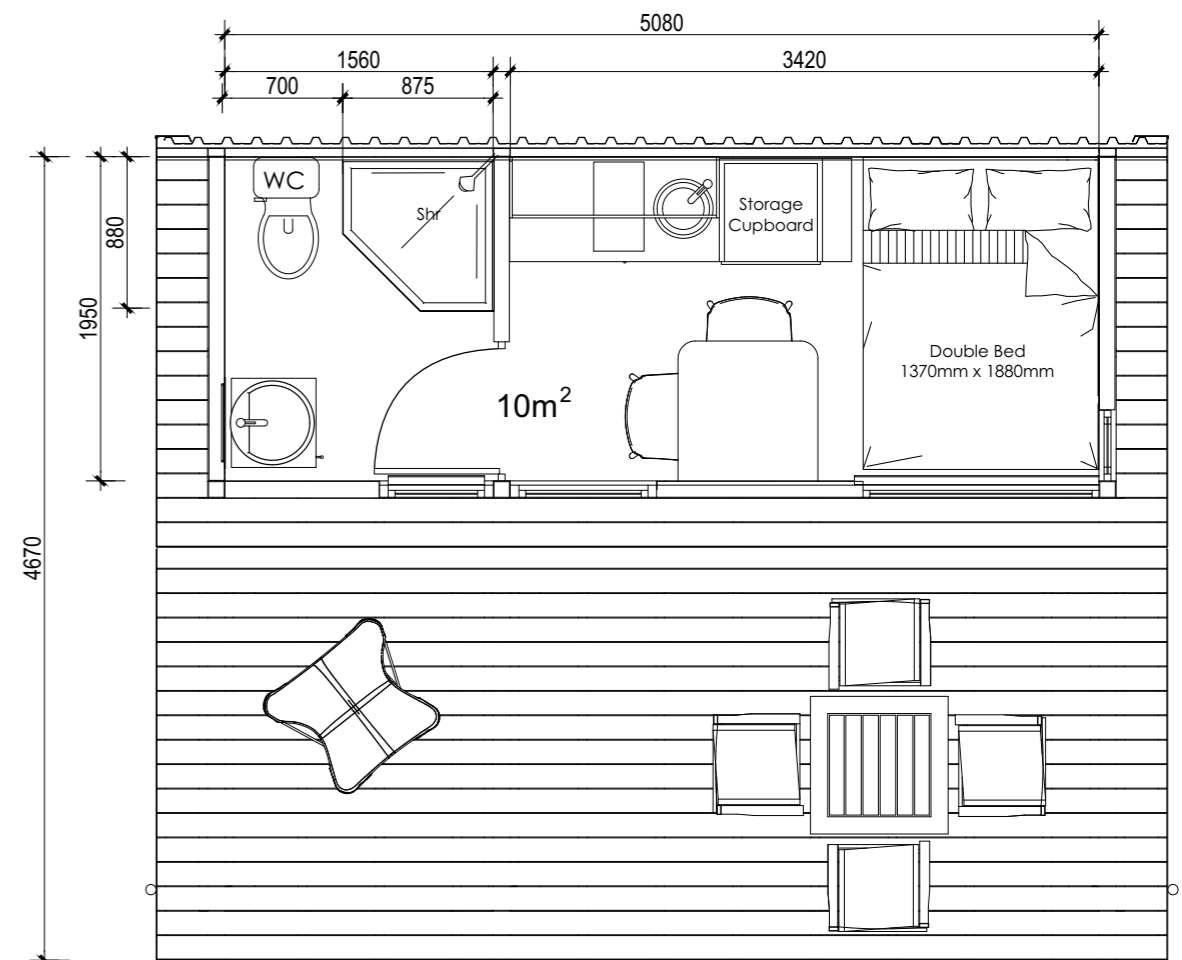
MAX plus

The instant room with the x-factor from **R218 000** incl. VAT



## X Pod max Specifications:

- Fully Engineered Certified Steel Frame Structure.
- Insulated IBR Roof.
- Agrément approved Eco Friendly Insulated Concrete Walls.
- Sealed OSB Flooring which can be covered with an optional additional Floor Covering available.
- Aluminium Windows & Doors.
- Retractable awning.
- Exterior Grade Composite Decking.
- No excavation for Foundations required.
- Adjustable Steel Footings.
- Optional Electrical Mains / Solar.
- Can be connected to water mains / Sewerage or Septic Tank.
- PC Amount of R 14,000-00 for Bathroom Fittings & Fixtures (*Shower; Whb; WC & Mixers*).
- PC Amount of R 22,000-00 for Storage Cupboard; Bed Base with Storage; Kitchenette Unit, Vanity Pedestal & Fold-Down Dining Table.
- Installation Included within Gauteng. Dependant on quantities, costs subject to quote outside Gauteng.
- Delivery Excluded.
- Blinds/Curtains and Furniture Excluded.
- Council Submission Drawings Excluded.



Mini Pod with Bathroom & Kitchenette  
Plan  
Not to Scale